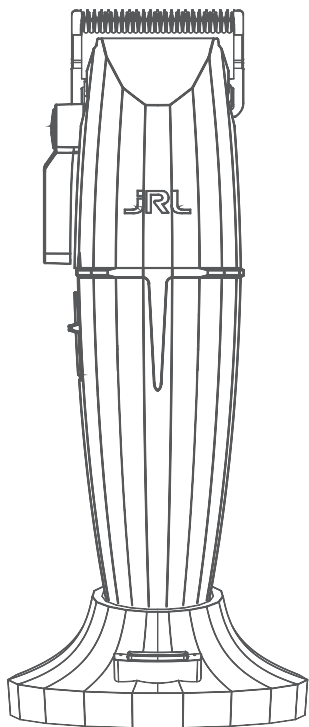
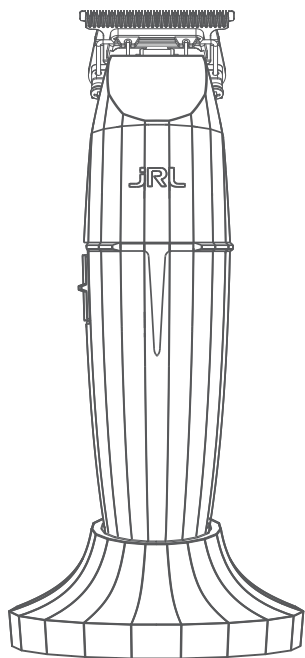


# GHOST I

Professional Hair Clipper & Trimmer



2020C-B



2020T-B



USER'S MANUAL

## Tips

1. This machine is not designed to be used on synthetic hair or for any other purpose other than cutting 100% human hair. The company will not take responsibility for malfunctions or damages caused by misuse.
2. This product is designed for professional use only.

## Safety precautions

### Keep Away from Children:

Please store clipper away from children. Clipper contains sharp blades and small parts that can be harmful to minors.

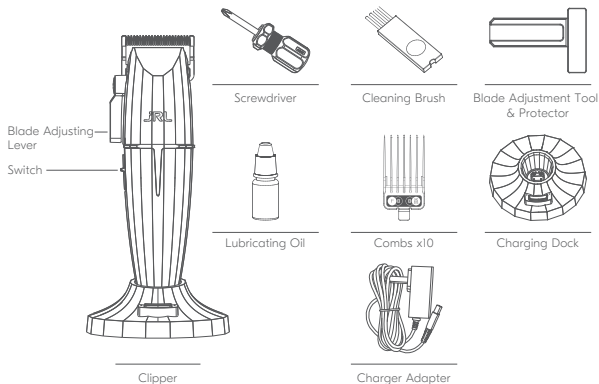
### Safety Use:

1. Unplug the power adapter before cleaning the clipper.
2. Remove the blade first, then use cleaning brush to remove any hair buildup.
3. Keep away from water in order to avoid shock or damage to the clipper.
4. If the clipper is accidentally dropped into water or any other chemicals, discard immediately. Do not try to dry it and plug it into a power source.
5. To properly store, remove clipper from dock, unplug adapter, and thoroughly clean your unit. Do not store the clipper on the charging dock or leave it attached to the adapter.
6. If the cord on the power adapter is damaged, stop using it immediately and replace right away.
7. Do not disassemble this product on your own. Visit authorized dealers for service and repair.
8. Choose the correct voltage socket before charging (AC100-240V 50/60Hz).
9. Please do not twist, disassemble or puncture the rechargeable battery within the clipper, otherwise it may cause a short circuit or burn the machine. If the battery is not working, do not run the clipper and take it to an authorized dealer.
10. Extended use in temperatures below  $-10^{\circ}\text{C}$  or above  $40^{\circ}\text{C}$  is not recommended as it may damage the battery.

### To Avoid Product Damage:

1. Only use original accessories.
2. Do not sharpen the blade on your own.
3. Only use the original power adapter manufactured by JRL. Using any other adapters from a different company may cause the clipper to malfunction while charging.
4. **WARNING:** For the purposes of recharging the battery, only use the detachable supply unit provided with this appliance.

## Product overview



## Product specifications

| Product code: 2020C-B |                           |                 |  |
|-----------------------|---------------------------|-----------------|--|
| Item                  | Specifications            | Item            | Specifications   |
| Power adapter         | Input AC 100-240V 50/60Hz | Type of battery | Lithium ion battery  |
|                       | Output DC 5V 2A           | Charging time   | 2.5 hours for Fast Charging<br>5 hours for Reset IQ Charge |
| Battery capacity      | 3.6V 3500mAh              | Usage time      | 5 hours  |

## How to charge your clipper

### Important: Use only original power cord to charge.

You can charge your unit on the portable charging base, or charge the clipper directly by plugging the power cord to the clipper itself.



**Note:** When the clipper is low on charge, the adapter can be plugged into the clipper directly. You may use the clipper while it is charging.

### Reset IQ Technology Charge

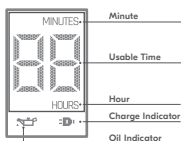
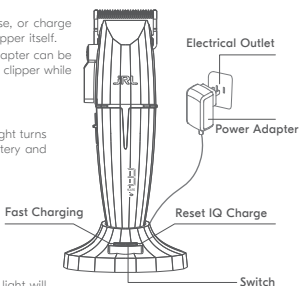
Connect charging base to the power adapter, green light turns on. Using the Reset IQ Charge will extend the life of battery and take about 5 hours to fully charge.

### Fast Charging Method

Press the button once on charging base to switch to fast charge , white light turns on. The set mode rapid Fast Charging Method takes approximately 2.5 hours.

### LED Functions

- When the clipper is not fully charged, the indicator light will continue to flash, and the battery indicator will show the current usable time.
- When the clipper has less than 40 minutes of usable time, the **JRL** warning light flashes in red.
- When the clipper has more than 40 minutes of usable time: **JRL** warning light flashes in white when Fast Charging **JRL** warning light flashes in green when Recovery Charging
- When the clipper is fully charged, the warning light will stop flashing and the white **JRL** light will remain on.



## Usage instructions

### Switching and shifting instructions:

Push the switch to turn the clipper on and off.

By pushing the switch, the speed of the clipper can also be adjusted:

O: Shutdown (off)

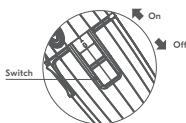
I: Power on / first gear 6000 RPM

II: Second speed 7500 RPM

### Clipper status indication by LED light:

The battery indicator shows the usable time of the clipper in the current speed setting.

- When the clipper is in high power mode, the **JRL** white light is on. After an hour of using the clipper, the oil Indicator will prompt.
- When the clipper battery is low, the **JRL** red light will flash.
- Clipper will automatically turn off all the lights and shut down when the battery is dead.



## Adjusting the cutting length

The clipper comes with 5 different adjustment levels, which are: 0.5mm, 1.4mm, 2.0mm, 2.8mm, 3.5mm. Users can adjust the level according to their needs.

- Push the blade adjustment lever forward for a closer cut.
- Push the blade back for the reverse effect.



## How to install and replace guards

Clipper comes with 10 guards.

Sizes are: 1/2#(1.5mm), 1#(3mm), 1-1/2#(4.5mm), 2#(6mm), 3#(10mm), 4#(13mm), 5#(16mm), 6#(19mm), 7#(22mm), 8#(25mm).

### Installing your guard:

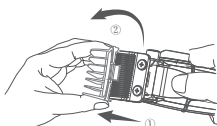
As shown in the figure below, align the card slot corresponding to the guard with the main unit of the product, and then lift the main unit gently until you hear a 'click', which indicates the installation of the guard is complete.



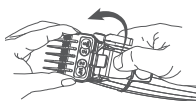
**Note:** Before replacing guard, make sure the clipper is turned off. Make sure the guard is installed properly, and is not loose before use.

### Removing your guard:

As shown on the right, you can remove the guard by turning the tail of the comb with your finger.



Guard installation



Remove guard method

## Blade maintenance



- Note:** 1. Please read the blade maintenance Instructions carefully before operating. Follow the instructions when removing and installing the blade to avoid improper assembly.
2. After the blade is installed, be sure to carefully check whether the corresponding parts have been firmly attached.
  3. Before operating, please unplug the power adapter and turn off the machine.
  4. When handling the blade, do not try to sharpen or alter the blade by yourself to avoid damaging your machine.

### Removing the blade:

- Hold the clipper as shown in Figure 1 on the right, loosen the screws shown, and remove the blade.
- When removing the blade, please hold the blade while holding the clipper to prevent the blade from falling and being damaged (caution: the blade is sharp. Pay attention to protect your hands).
- As shown in Figure 2 on the right, remove the upper blade and the movable blade holder together.

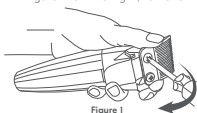


Figure 1

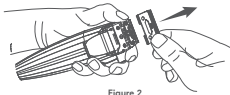


Figure 2

### Blade cleaning and maintenance:

Figure 1. Use a brush to clean the main body, the hair debris in the upper and lower blades and the movable blade.

Figure 2. After the cutter head is installed, drip 1-2 drops of lubricant on the corresponding five areas.

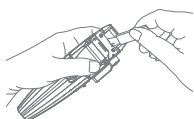


Figure 1

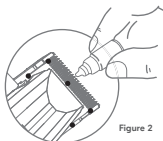
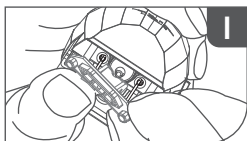
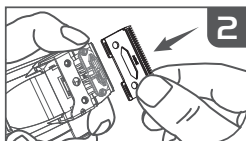


Figure 2

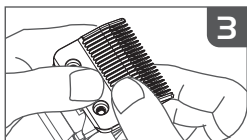
### How to install the blade:



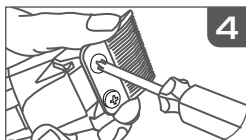
1  
Install the movable blade on the two pins of the spring attachment.



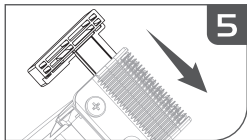
2  
Put the upper blade on the movable blade firmly (no looseness).



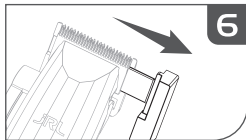
3  
The lower blade is pressed down firmly and aligned with the bottom screw hole.



4  
Insert the screw clockwise into the 3/4 depth.



5  
Insert the blade adjustment tool. Check that upper and lower blades are centered and parallel.



6  
Tighten the screws, take out the blade adjustment tool to complete the blade assembly.

## Warranty

1. Under normal conditions of proper use and maintenance of the product, the warranty period of the product is 1 year.
2. Expendable parts, such as blades, guards, lubricants, cleaning brushes, etc., are not under the terms of the warranty.
3. The following conditions are not covered by the warranty service:
  - Failure to show a valid receipt/ proof of purchase who is inconsistent with the actual product. Receipt/ proof of purchase must be included
  - Clippers with alterations will not be covered by the warranty service.
  - Failure to follow the instructions in the instruction manual to operate and maintain the clipper, causing it to malfunction or damage it by dropping the clipper, immersing the clipper in water and physical alterations of any kind will void the warranty service.
  - Product damage due to transportation or improper storage.
4. The company will charge a maintenance fee for products without a receipt/ proof of purchase or beyond the warranty period.
5. Please send the clipper in need of repair or warranty to Bratt Trading AB for repair, maintenance, or replacement.

PATENTS:

2023 3035 2725.7

2023 1168 3285.9

2023 2335 0574.5

2020 2310 2170.0

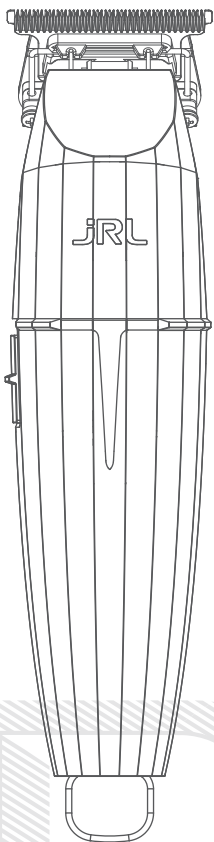
2022 2353 3128.3

2020 3024 4731.7

**ONYX**

**FF 2020T-B**

Professional Cordless Hair Trimmer



USER'S MANUAL

## Tips

1. This product is designed for professional use only. This machine is not designed to be used on synthetic hair or for any other purpose other than cutting 100% human hair.
2. The company will not take responsibility for malfunctions or damages caused by misuse.

## Safety precautions

### Keep Away from Children:

Please store trimmer away from children.

Trimmer contains sharp blades and small parts that can be harmful to minors.

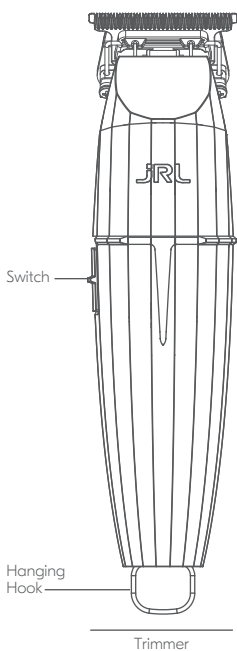
### Safety Use:

1. This appliance can be used by children aged from 8 years and above and persons with reduced physical, sensory or mental capabilities or lack of experience and knowledge if they have been given supervision or instruction concerning use of the appliance in a safe way and understand the hazards involved.
2. This appliance is not intended for use by persons (including children) with reduced physical, sensory or mental capabilities, or lack of experience and knowledge, unless they have been given supervision or instruction concerning use of the appliance by a person responsible for their safety.
3. Children shall not play with the appliance.
4. Cleaning and user maintenance shall not be made by children without supervision.
5. The appliance is only to be used with the power supply unit provided with the appliance.
6. **WARNING:** Keep the appliance dry.
7. This appliance contains batteries that are non-replaceable.
8. Unplug the power adapter before cleaning the trimmer.
9. Remove the blade first, then use cleaning brush to remove any hair buildup.
10. Keep away from water in order to avoid shock or damage to the trimmer.
11. If the trimmer is accidentally dropped into water or any other chemicals, discard immediately. Do not try to dry it and plug it into a power source.
12. To properly store, remove trimmer from dock, unplug adapter, and thoroughly clean your unit. Do not store the trimmer on the charging dock or leave it attached to the adapter.
13. If the cord on the power adapter is damaged, stop using it immediately and replace right away.
14. Do not disassemble this product on your own. Visit authorized dealers for service and repair.
15. Choose the correct voltage socket before charging (AC100-240V 50/60Hz).
16. Please do not twist, disassemble or puncture the rechargeable battery within the trimmer, otherwise it may cause a short circuit or burn the machine. If the battery is not working, do not run the trimmer and take it to an authorized dealer.
17. Extended use in temperatures below -10°C or above 40°C is not recommended as it may damage the battery.

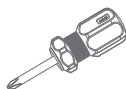
### To Avoid Product Damage:

1. Only use original accessories.
2. Do not sharpen the blade on your own.
3. **WARNING:** For the purposes of recharging the battery, only use the detachable supply unit provided with this appliance.

## Product overview



Blade Adjustment Tool



Screwdriver



Blade Protector



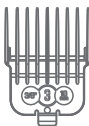
Cleaning Brush



Lubricating Oil



Charger Adapter



Combs x5



Charging Dock

## Product specifications

| Product code: 2020T-B |                           |                 |                     |
|-----------------------|---------------------------|-----------------|---------------------|
| Item                  | Specifications            | Item            | Specifications      |
| Power adapter         | Input AC 100-240V 50/60Hz | Type of battery | Lithium ion battery |
|                       | Output DC 5V 2A           | Charging time   | 1.5 hours           |
| Battery capacity      | 3.7V 2000mAh              | Usage time      | 3.5 hours           |

## How to charge your trimmer

**Important:** Use only original power cord to charge.

You can charge your unit on the portable charging base, or charge the trimmer directly by plugging the power cord to the trimmer itself.



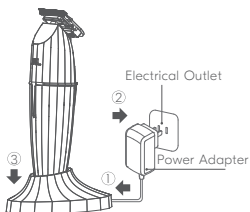
**Note:** When the trimmer is low on charge, the adapter can be plugged onto the trimmer directly. You may use the trimmer while it is charging.

### LED functions

When the trimmer has less than 10 minutes of usable time, the **JRL** warning light flashes in red.

When the trimmer has more than 10 minutes of usable time, the **JRL** warning light flashes in white.

When the trimmer is fully charged, the warning light will stop flashing and the white **JRL** light will remain on.



## How to operate

### Switching and shifting instructions

Push the switch to turn the trimmer on and off.

O: Shut down

I: Power on, 8200 RPM

### Trimmer Status indication by LED light

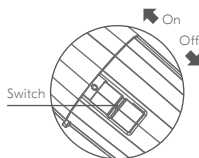
The JRL LED light shows the usable time of the trimmer in the current speed setting.

When the trimmer is in high power mode, the **JRL** white light is on.

When the trimmer is in medium power mode, the **JRL** red light is on.

When the trimmer battery is low, the **JRL** red light will flash.

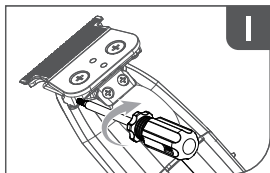
Trimmer will automatically shut down/off when battery is dead.



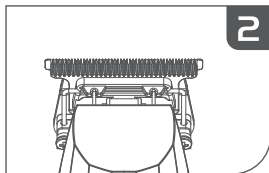
### How to adjust cutting length to 0 mm



**WARNING:** Before operating, please make sure the trimmer is turned off. After the blade is installed, be sure to carefully check whether the corresponding parts have been firmly attached. Do not try to sharpen or alter the blade by yourself to avoid damaging your trimmer.



Adjust the blade with the blade adjustment tool.



Check that upper and lower blades are centered and parallel.

## Blade maintenance

### Note:

1. Please read the blade maintenance instructions carefully before operating. Follow the instructions when removing and installing the blade to avoid improper assembly.
2. After the blade is installed, be sure to carefully check whether the corresponding parts have been firmly attached.
3. Before operating, please unplug the power adapter and turn off the trimmer.
4. When handling the blade, do not try to sharpen or alter the blade by yourself to avoid damaging your trimmer.

### Removing your blade

As seen in Figure 1, hold the bottom blade with your fingers to avoid the blade from moving. Loosen the screws and remove the blade. Make sure you hold the blade and the trimmer when disassembling to prevent parts from falling and getting damaged.

### Installing your blade

As shown in Figure 2, align the screw slots corresponding to the blade and main unit of trimmer. Tighten the screws. Then the installation of the blade is complete.

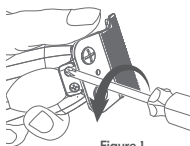


Figure 1

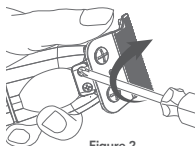


Figure 2

### Blade cleaning and maintenance

Figure 3: Use a brush to clean the main unit & the hair debris on the blade.

Figure 4: Drop 1-2 drops of lubricant oil to the corresponding five areas.

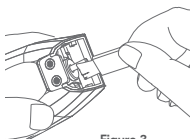


Figure 3

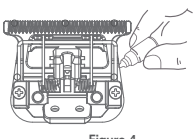
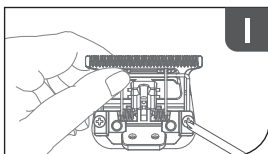
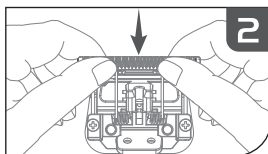


Figure 4

### How to reset the blade

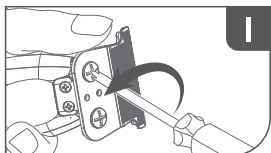


Loosen the screws shown, and remove the blade (Caution: the blade is very sharp, pay attention to protect your hands).

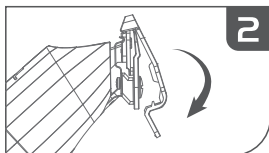


Hold the upper blade and push it down to reset it, then tighten the screws and adjust the gap as you need.

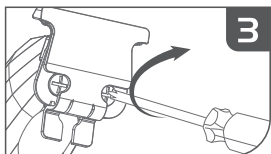
## Trimmer blade adjustment instructions (altering blade for closer cut)



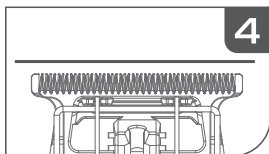
Loosen the screws 180 degrees



Install blade adjustment tool (protector)



Tighten the screws



Ensure blades are properly aligned

## How to install and replace guards

Trimmer comes with 5 guards.

Sizes are: 1/2# (1.5 mm), 1# (3 mm), 2# (6 mm), 2-1/2# (8 mm), 3#(10 mm)

### Installing your guard:

As shown in the figure below, align the card slot corresponding to the guard with the main unit of the trimmer, and then lift the main unit gently until you hear a 'click', which indicates the installation of the guard is complete.



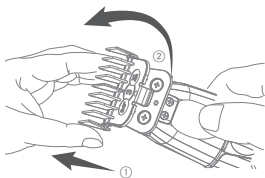
### WARNING:

Before replacing guard, make sure the trimmer is turned off.

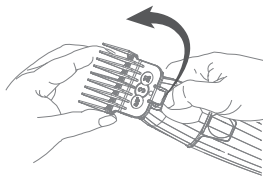
Make sure the guard is installed properly, and is not loose before use.

### Removing your guard:

As shown below, you can remove the guard by turning the tail of the comb with your finger.



Guard installation



Guard removal

## Warranty

1. Under normal conditions of proper use and maintenance of the product, the warranty period of the product is 1 year.
2. Expendable parts, such as blades, guards, lubricants, cleaning brushes, etc., are not under the terms of the warranty.
3. The following conditions are not covered by the warranty service:
  - Failure to show a valid warranty card, or the information on the warranty card is inconsistent with the actual product.
  - Trimmers with alterations will not be covered by the warranty service.
  - Proof of purchase must be included with warranty card.
  - Failure to follow the instructions in the instruction manual to operate and maintain the trimmer, causing it to malfunction or damage it by dropping the trimmer, immersing the trimmer in water and physical alterations of any kind will void the warranty service.
  - Product damage due to transportation or improper storage.
4. This warranty card is the only warranty certificate, please store it properly along with your proof of purchase.
5. The company will charge a maintenance fee for products without a warranty card or beyond the warranty period.
6. Please send the trimmer in need of repair or warranty directly to the designated JRL domestic service center for repair, maintenance, or replacement.

## Warranty card

Customer Contact Information:

Client Name: \_\_\_\_\_ Contact Phone: \_\_\_\_\_

Address: \_\_\_\_\_

Date Purchased: \_\_\_\_\_ Exp of Warranty Period: \_\_\_\_\_

Proof of Purchase:  Enclosed  Not Enclosed (Warranty Automatically Voided)

Machine Serial Number: \_\_\_\_\_

Reason of Return: \_\_\_\_\_



**Guang Zhou Eagle  
Fortress Hair Products Ltd.**

No.4 Shuanglong Yucai  
Street, Shiling Town, Huadu  
District, Guangzhou, 510899,  
China

**Bratt Trading AB**

Radiovägen 34  
135 48 Tyresö SWEDEN  
+46 (8) 712 95 10  
info@bratt-trading.se  
www.bratt-trading.com



[www.jrl.com](http://www.jrl.com)



[www.bratt-trading.com](http://www.bratt-trading.com)



PVC



PE-LD



PAP

